

# Bicycle Stamps

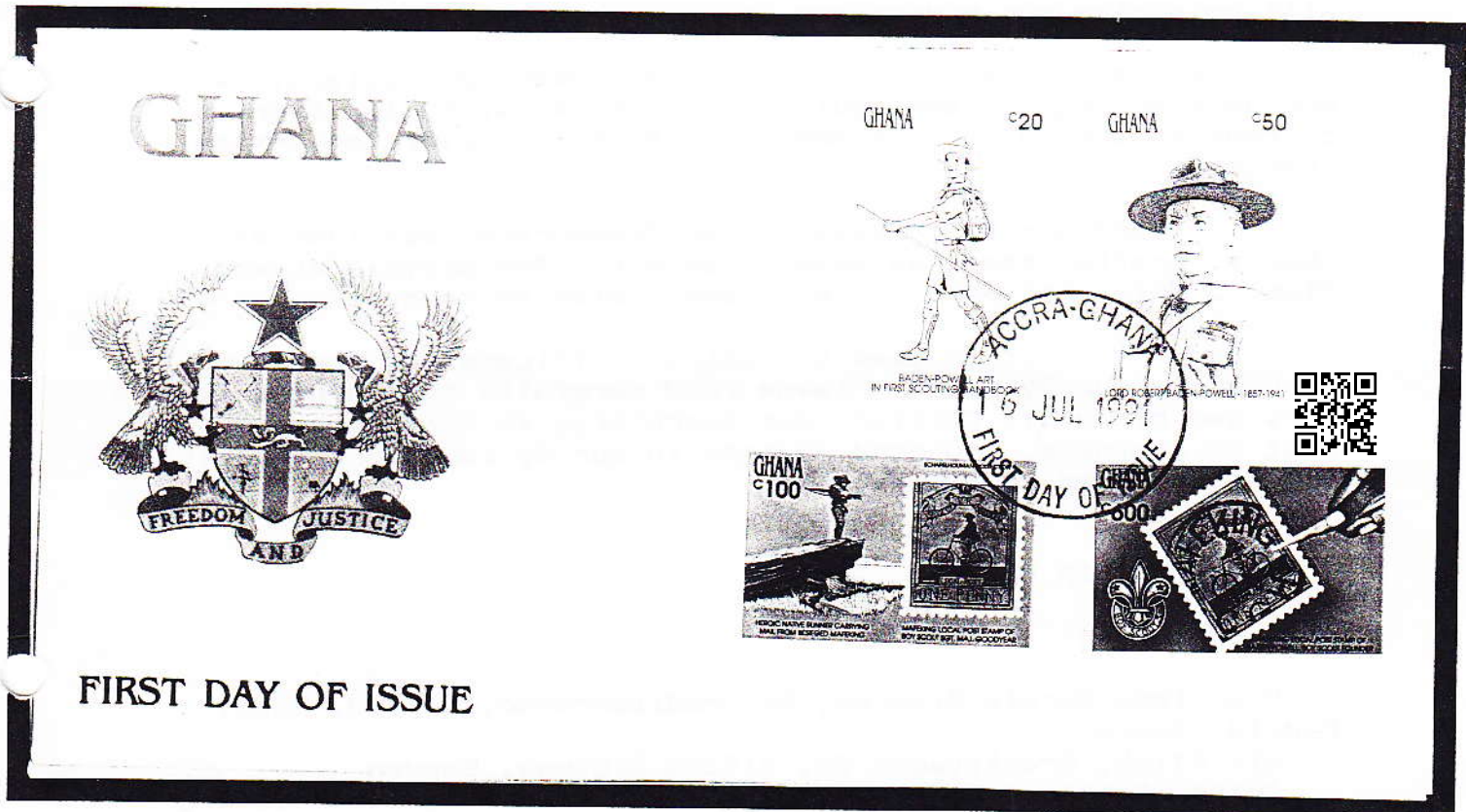
(M)

1991 - SUMMER 1991

Editor: Norman Batho

Officers: Douglas Marchant, President  
Graham Wade, V. President  
Benoit Carrier, Secretary  
Anthea & Ian Dodd, Treasurer

U.S.A.



**Bicycle Stamps** is the official publication of the Bicycle Stamps Club. The magazine is included as a benefit of membership. Annual dues are \$24.00USD, £14 Sterling, or the equivalent.

Membership inquiries should be sent to either the Secretary, Benoit Carrier,  
Canada or to the Treasurer, Anthea & Ian Dodd,  
England

Subscriptions payments may be sent to the Treasurer, at the address above, or to Bill Hofmann,  
Treasurer for the USA, at

11

CONTENTS

New Issue Update. . . . . 3  
 Postal Letter Sheets, Covers and Aerograms  
 from the German Dem. Rep. . . . . 9  
 Cancellations . . . . . 17  
 From the Treasurer. . . . . 17a  
 Pony Express Riders Had Their Day,  
 and so Did Bicyclists Back in 1894 - Part II  
 by Bert Schapelhouman . . . . . 18  
 From the President. . . . . 25  
 From the Secretary. . . . . 26  
 Cinderella Update . . . . . 28  
 ETC . . . . . 30

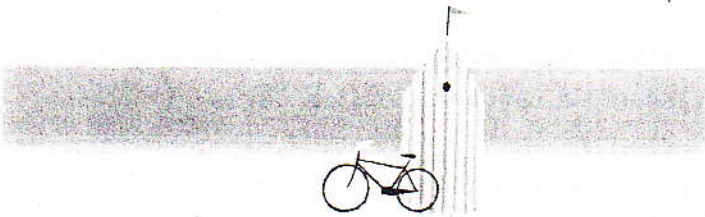
^ ^

NEW ISSUE UPDATE

郵便はがき



郵便はがき  
郵便はがき





OLD, NEW, AND NEWLY ANNOUNCED ISSUES NOT PREVIOUSLY REPORTED, AND PREVIOUSLY LISTED  
ISSUES FOR WHICH THE DATE OF ISSUE AND/OR A PHOTO IS NOW AVAILABLE

				Number in set
1	HUNGARY	16.10.1973	10fo SKYLAB SHEET OF 1 EXERCYCLE IN MARGIN	1
	This Hungary sheet was also issued imperforate.			
2	ARGENTINA	. .1975	1.20p HAY WAGON FOLLOWED BY CYCLIST	8
3	GREECE	25.06.1976	11d OLYMPIC MONTREAL VELODROME	6
4	SRI LANKA	26.12.1990	10r BICYCLE FRONT OF NUWARA-ELIYA P.O.	4
5	SAHARA OCC.	. .1990	40p OLYMPIC BARCELONA CYCLIST	5+S
6	INDIA	27.01.1991	6.50r SAFETY	1
	India's issue date has also been reported as 30.01.91. Confirmation is wanted.			
7	GERMANY	14.02.1991	booklet FOR THE SPORT CYCLISTS ON COVERS	4+3S+B
8	GERMANY	14.02.1991	pane PANE OF 6 14.02.91 GIRL ON BICYCLE	4+3S+B
9	GERMANY	14.02.1991	pane FOR THE SPORT GIRLS PANE OF 2 DIFF	4+3S+B
10	CUBA	20.02.1991	40c OLYMPIC BARCELONA CYCLING	6+S
11	ST VINCENT	25.03.1991	5\$ FLINTSTONES CYCLING	4+S
12	NETHERLANDS	16.04.1991	pane BICYCLE AGAINST FARM HOUSE	3+B
13	CHRISTMAS ISLAND	17.04.1991	43c POLICE ISSUE 3/4 OF BICYCLE	4+S
14	CHRISTMAS ISLAND	17.04.1991	sheet SHEET OF 4 DIFF	4+S
15	BULGARIA	07.05.1991	30st LETTER CARRIER ON BICYCLE	1
16	UNITED STATES	22.05.1991	29c WILLIAM SAROYAN, AUTHOR	1
17	RUSSIA	22.05.1991	1r WILLIAM SAROYAN, AUTHOR	1
18	JAPAN	03.06.1991	41y POSTAL CARD WIND OF HIGHLAND	2
19	JAPAN	03.06.1991	41y POSTAL CARD SEA BREEZE	2
	The two postal cards above have a bike on the stamp and on the back (page 3)			
20	UNITED STATES	28.06.1991	- IVCA BALLOON AND BICYCLE POST	1
21	JAPAN	. .1991	40y ECHO CARD GIRL LEANING ON HANDLEBARS	1
22	MEXICO	. .1991	2100p EXPORTA BICYCLE	1
	This Mexico stamp has been issued with two different gums.			
23	GRENADA GRENADINES	. .1991	5\$ DONALD DUCK PEDAL POWERED GENERATOR	4+S
24	VIET NAM	. .1991	400d OLYMPIC BARCELONA TWO CYCLISTS	?
25	EQUATORIAL GUINEA	. .1991	250c OLYMPIC BARCELONA CYCLIST	2+S
26	GRENADINES ST VIN.	. .199?	? ROYAL LODGE AT WINDSOR GARAGED BIKE	??
27	ANTIGUA & BARBUDA	. .1991	? TRAIN AND BICYCLE part 2	4
28	GHANA	16.07.1991	800c STAMP ON STAMP MAFEKING SHEET OF 1	4+S
29	GHANA	16.07.1991	600c STAMP ON STAMP MAFEKING	4+S
30	GHANA	16.07.1991	100c STAMP ON STAMP MAFEKING	4+S

See the front cover for above 2 stamps.

Photos are needed for #17, #26, 27.

Many thanks to BSC members Bert Schapelhouman, Takao Ono, Tore Josefsson, Douglas Marchant, and Piet Hein Hilarides for supplying news, photos, and/or dates of issue of the items listed above.

New issue items #4 & 5 pictured in BS10A have been determined not to be Velodromes as reported, and have no bicycle significance.

Takao Ono has supplied photos of several additional stamps of Thailand that have appeared in the same "Bicycle" booklet as pictured on page 7 of BS10A. Photos and a complete list of those known to your Editor will be supplied on request.





5



2



3



6



16



12

5



8 Sportbriefmarken 100 + 50 Pf. Markenwert 9,- DM

# SPORT MARKENHEFTCHEN 1991



Sport-Briefmarken verwenden  
Sport-Briefmarken verwenden

- 7. Front cover
- 9.
- 7. Rear cover

Entwürfe zur Sonderpostwertzeichen-Serie  
"FÜR DEN SPORT"



Köblinger

Sibylle Haase  
Fritz Haase

Offizieller Farbsonderdruck der Stiftung Deutsche Sporthilfe  
Nach Entwürfen von Professor Ernst Köblinger sowie Sibylle und Fritz Haase

© Bundesdruckerei 1991



## Jutta Niehaus

Radsportlerin  
geboren am 1. Oktober 1964

Olympiazweite 1988 – Straße  
Weltmeisterschaftsvierte 1989 – Bahn  
mehrfache Deutsche Meisterin – Bahn und Straße





13



14



10



11



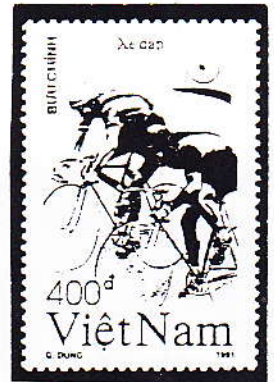
15



23



22



24

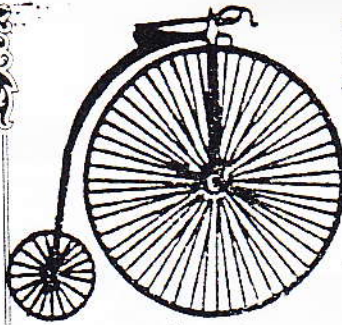


BALLOON and  
HIGH WHEEL BICYCLE  
CARRIED MAIL



INTERNATIONAL VETERAN CYCLE ASSOCIATION  
11th INTERNATIONAL RALLY  
and WORLD CHAMPIONSHIPS  
hosted by The Wheelmen National Annual Meet  
26-30 June 1991 • Findlay, Ohio • U.S.A.

Cover sponsored by Fort Findlay Stamp Club



I.V.C.A. STATION

JUNE 23 1991

FINDLAY, OH 45840

1890s 24.1  
USA



ZIP+4



*Widuar*  
CELEBRATION

20

郵便はかき



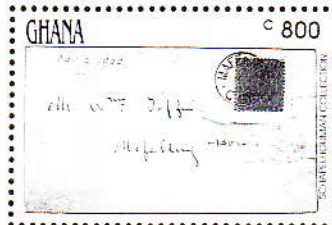
SKETCH OF CADET SGT. MAJ. GOODYEAR BY BADEN-POWELL



Just a few lines from the  
original sketch by Baden-Powell  
to describe the man in the  
uniform. The man in the  
uniform is a Scoutmaster.  
The man in the uniform is  
a Scoutmaster. The man in  
the uniform is a Scoutmaster.



Sgt. Major Goodyear



WORLD SCOUTING



LETTER FROM THE MAKING TRENCHES - 1900

28



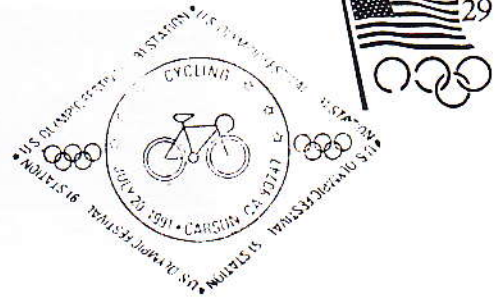
21



25

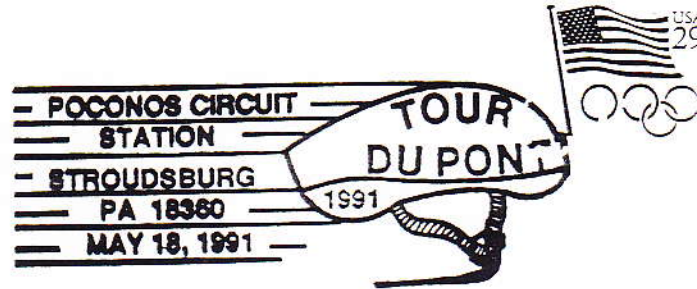
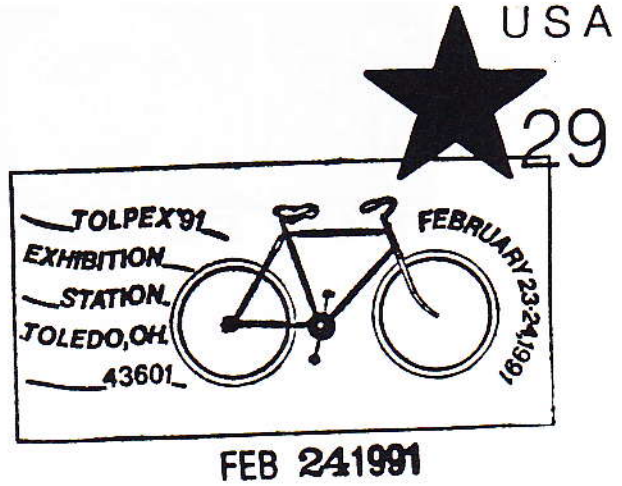


CANCELLATIONS



郵便

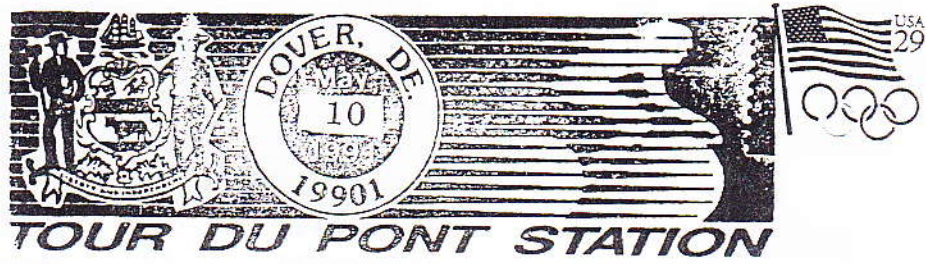
郵便は



There were 14 different cancellations for the Tour Du Pont however they did not all copy well.

Many thanks to Sherry Schmidt, Shiro Yagami, and David Sher, for supplying the cancellations that appear in this issue of BS, and/or information about them.







PART II  
**PONY EXPRESS RIDERS HAD THEIR DAY  
AND SO DID BICYCLISTS BACK IN 1894**

by Bert Schapelhouman

I will now concentrate on the stamps printed toward the end of the railroad strike, when Banta ordered another 2000 stamps from Donze, the engraver, on July 16, 1894. We do not know the date these stamps were actually printed, nor do we know with reasonable certainty, how many Donze might have printed for himself. Possibly, the stamps were printed on the 17th or 18th of July, 1894, after the railroad strike was already over.

From this printing, a number of sheetlets exist both with and without vertical rouletting. The overall size of the pre-cut paper used for this July 16th printing, known as R-1 has a height of about 62-63mm. Any sheet under 65mm high is probably from this printing. The individual stamps from this printing have smaller margins than those from the earlier printings.



1 Second Stamp, S-2

The earlier sheets of the first and second stamp S-2, printed on July 7, 1894, usual height is circa 68mm.

The alignment of the July 16, 1894 printing seems somewhat careless when compared with the precision of the earlier issued stamps.

The autographed souvenir copies usually belong to this printing, R-1. Right and left margin copies of R-1 exist autographed by Arthur C. Banta and by him in association with O.J. Treat, the printer. There also seems to be an example with an autograph of Eugene Donze, the engraver.

On July 28, 1894, Mr. Banta mailed a number of form letters printed on his letterhead. This letter was clearly intended to stimulate the sale of stamps and envelopes. The letters are all dated July 28, 1894, with a rubber handstamp, each is individually signed.

At that time philately had taken over. In the month of August 1894, articles appeared in the New York Daily Tribune and other national magazines, stating that used stamps were already commanding a high premium in San Francisco. The papers claimed that \$1.00 was being paid

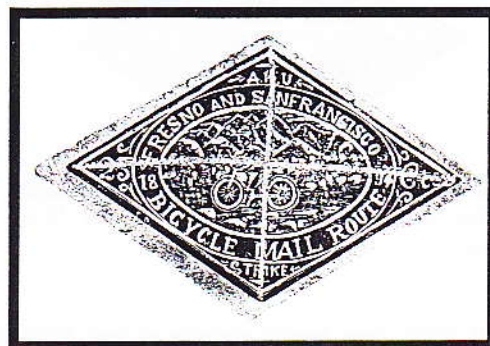
for a single stamp, while the used envelopes brought \$5.00 to \$10.00 each.



2 Stamp R-1

The firm of W. Sellschop & Co., a San Francisco stamp dealer, bought the first 100 stamps from Eugene Donze, and these were advertised for \$1.50 each in the journal *Filatellic Facts and Fallacies* for August, September and October, 1894. Banta also advertised in the same Journal during the same period with the R-1 issue, or so it seems.

In my first article, Issued in the Tenth Issue, Fall 1990, I related to you the story of Die III - the engraved counterfeit by Eugene Donze, and the original Die I-R-D which was defaced on August 23, 1894 in the presence of Jenney and Banta, and sworn before C.G. Grimes, Notary Public.



3 Stamp R-2

Probably during September 1894, Eugene Donze had an unknown number of impressions made from the defaced Die I-R-D, Known as R-2, Die I-R-D. There are claims that as many as 3000 of these defaced stamps were printed. A copy of the affidavit along with a single copy of these defaced stamps were sold by Donze for 7 cents as per his advertisement in the November 1894 issue of *Filatellic Facts and Fallacies*. This advertisement appeared through February 1895. It seems, however, that sales of this item were not very good.

In March of 1935, the Memorial Re-Run was printed. The

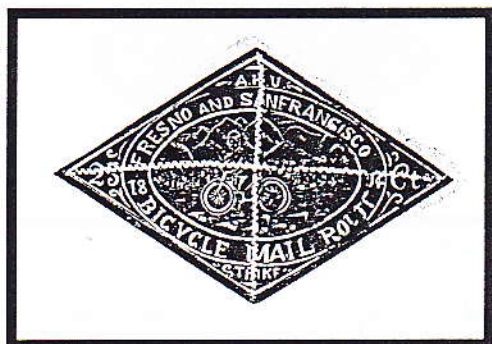


sanction for the road race was already received by Banta on January 11, 1935 from H.J. McCauley of Cycle Trades of America. Several Articles appeared in various bicycle journals and the local press. The entry blank indicates that the race was to be completed in eight relays, like the original, but Banta reports that it turned into more of an endurance contest.

The 1935 stamps appear to have all been individually printed from the same electrotype, S-2, as the original defaced die was borrowed from the daughter of Eugene Donze, for the purpose of preparing reprints for the memorial re-run.

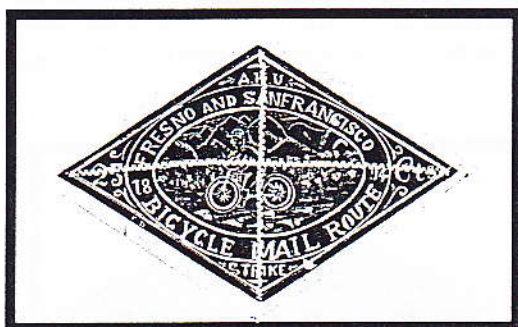


6 Stamp S-3 - Issued stamp with MAIL obliterated.



4 Stamp S-3E - without MAIL struck out.

A letter to Banta, dated February 1, 1935 from the Second Assistant Postmaster General permitted cachets and the printed reproduction of the bicycle stamp providing the word MAIL was obliterated.



5 Stamp S-3EA - White spot below MAIL variety.

There is at least one major variety of the 1935 stamp, known as an essay, S-3 Ea, There is a white spot in the outer frame line below the word MAIL. The number of stamps printed for this occasion seems to be 2000 copies.

This the S-3 issue of 1935 have the word MAIL blocked out with a deep green impression from the printer's slugs. The use of this stamp issue was authorized by the Post Office Department, and they were properly used. Besides Mr. Banta, two of the original riders, R.O. Puryear and W.B. Atwater, watched the start of the race.

The Garden City Wheelmen and the San Jose Cycling Club supplied the riders. At 8:00am the race was started from San Francisco and Fresno. The mail arrived in San Francisco at 6:43pm, for an elapsed time of 10 hours and 34 minutes. The mail from San Francisco to Fresno arrived at 4:56pm, taking 8 hours and 56 minutes. These times were much better than the original 1894 ones, but this was a race and the 1935 roads were no doubt much better than the unpaved rutted ones of 1894. Covers for these re-runs could be ordered in advance. These covers are handstamped in blue ink with a serial number on the upper left corner of the envelope. A different number seems to have been assigned to each customer and not to each cover. Therefore, there are two covers, one in each direction, having the same number and address. The newspapers reported that about 1500 of these covers were carried.

On July 13th, 1944, Banta mailed memorial covers illustrated with a portrait of himself in the upper left hand corner. It was a diamond jubilee cover for Banta and a golden jubilee cover for his bicycle mail.

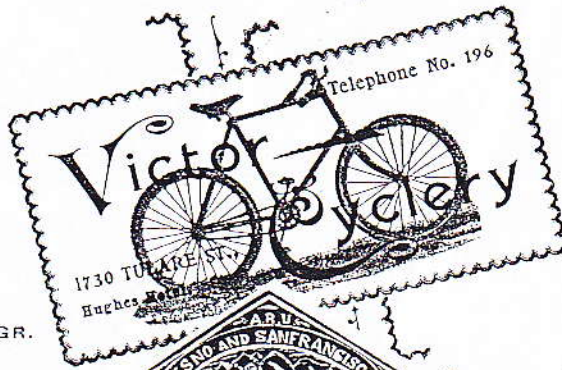
Mr. Arthur C. Banta died in 1945, at the age of 76, and is buried in Oakhill Cemetery in San Jose, California.

Mr. Eugene A. Donze, the engraver, passed away in August of 1931.

It is still possible that new finds may turn up, but very soon a century will have passed since the original printings, thus the prospect of other surprises are not very likely.



VICTOR PNEUMATIC  
 WHEELS TO RENT.  
 NEW AND SECOND-  
 HAND WHEELS SOLD  
 ON INSTALLMENT PLAN.  
 RIDING TAUGHT.  
 DIFFICULT REPAIRING  
 SOLICITED



SPORTING GOODS  
 BICYCLE SUITS AND  
 CYCLING SUNDRIES  
 ALWAYS IN STOCK.  
 HEADQUARTERS FOR  
 ALL THE LATEST  
 CYCLING NOVELTIES.  
 ETC., ETC., ETC.

ARTHUR C. BANTA, MANGR.



FRESNO, CAL.,

9-28-15

DEAR SIR:

Enclosed please find one of the original Stamps issued for use on the Fresno and San Francisco Bicycle Mail Route during the A. R. U. Strike. Kindly accept same with compliments.

Very respectfully yours,

*Arthur C. Banta*

**A Unique Stamp.**

Collectors of stamps have now an opportunity to add a valuable specimen to their collection. The stamp, which will be a memento of the present railroad difficulties, is one issued by Arthur Banta, and used on his mail route to San Francisco. The stamps are green and diamond-shaped. On them are the words "Fresno and San Francisco Bicycle Mail Route. 25 cts. A. R. U. Strike, 1894." In appearance, except as to shape, they resemble a government stamp. The engraving, which is excellent, was done by E. Donze of this city.—*Expositor, July 12.*

**A New Stamp.**

The bicycle messenger route established between Fresno and San Francisco has brought into existence a new postage stamp, which in time will be looked upon as a curiosity and also a souvenir of the present railway troubles. The stamps were issued by A. C. Banta,

and every letter going over the route bears one of them. Two styles of stamps were issued. The adhesive is green in color, while the envelope stamp is a red brown. In an inner oval are the words "Fresno and San Francisco Bicycle Mail Route, 1894, A. R. U. Strike, 25 cts." In the center of the oval is a messenger mounted on a bicycle with the foothills looming up in the background and sagebrush in the foreground.—*Republican, July 13.*

**MAIL BY BICYCLE.**

A Messenger Service Between Fresno and San Francisco.

A feature of the interruption of railroad operations was the utilization of the bicycle for business purposes.

Every one knows how it carried copies of the EXAMINER to neighboring towns with greater speed than the best teams, but all do not know that a bicycle message route was established from Fresno to San

Francisco. The service was daily for mail matter, and the intermediate points covered were White's Bridge, Pacheco Pass, Gilroy and San Jose. Envelopes were sold for 25 cents, reading: "Fresno and San Francisco Bicycle Mail Route." Above the legend were the letters "A. R. U.," and below the word "Strike," while in the center was a representation of a speedy bicyclist on his wheel, and on the two sides, "25 cents." Mail matter was deposited at the Victor Cyclery in Fresno and at the Overman Wheel Company's office in this city, and when the town to which it was addressed was reached it was deposited in the local postoffice and at once delivered. There were letters carried between these two points on bicycles, with no Pullman car attached.—*S. F. Examiner.*

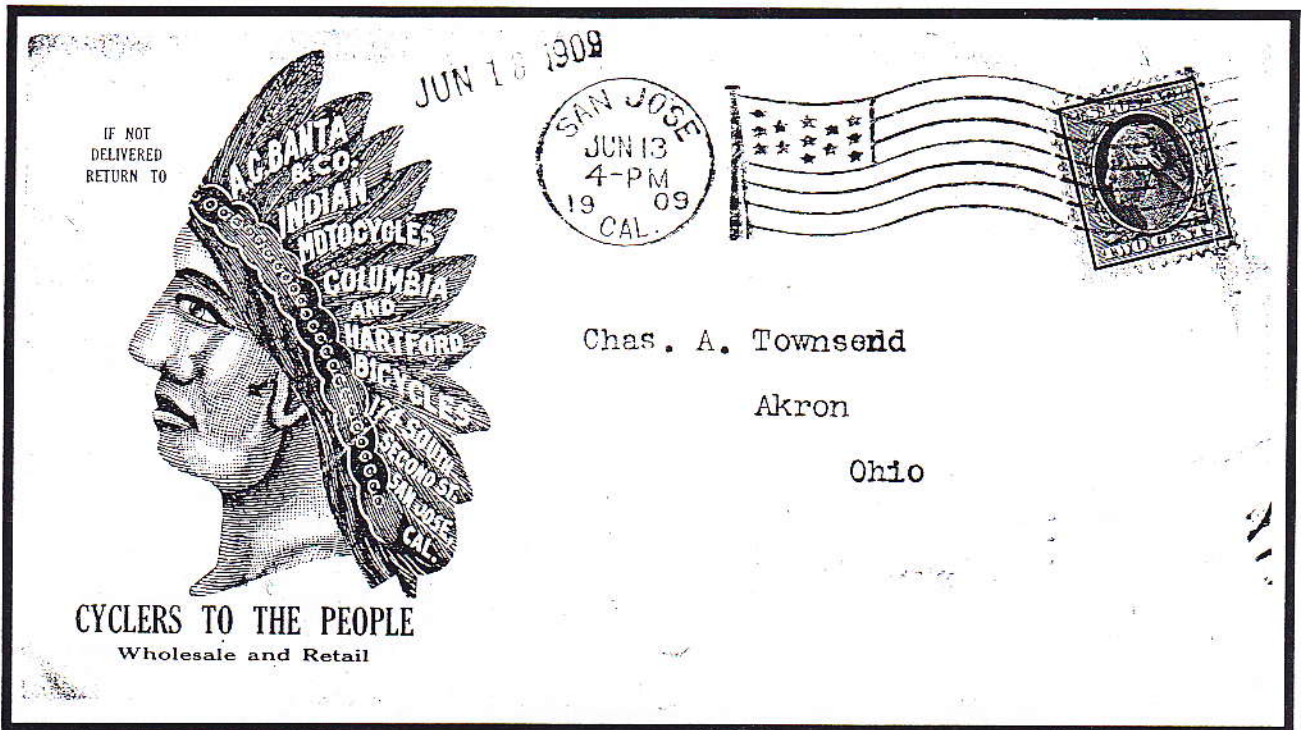
This was the only regular service for mail between Fresno and San Francisco from July 6 to July 14. The distance, 210 miles, was divided into 6 relays, and the schedule time was 18 hours.

Banta's July 28, 1894 advertising letter.





Die 1, Die I-R, signed by Arthur C. Banta.



A.C. Banta advertising cover from San Jose. June 13, 1909.



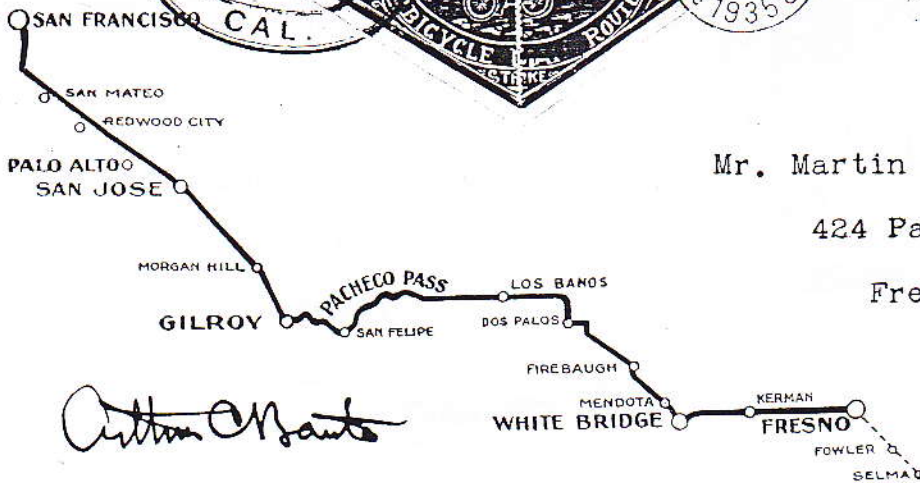
Die 1, Die I-R, Printed July 16, 1894. Approximately 2,000 copies were printed.



509



ADDRESS YOUR MAIL TO STREET AND NUMBER



Mr. Martin H. Johannsen  
 424 Palm Ave.,  
 Fresno,  
 Calif.

FROM  
 ARTHUR C. BANTA  
 1735 KIRKHAM ST.  
 SAN FRANCISCO, CALIF.



During the strike of the American Railway Union against the Pullman Car Company, July 6-18, 1894, Arthur C. Banta operated a Bicycle Mail Route between Fresno and San Francisco, a distance of two hundred and ten miles.

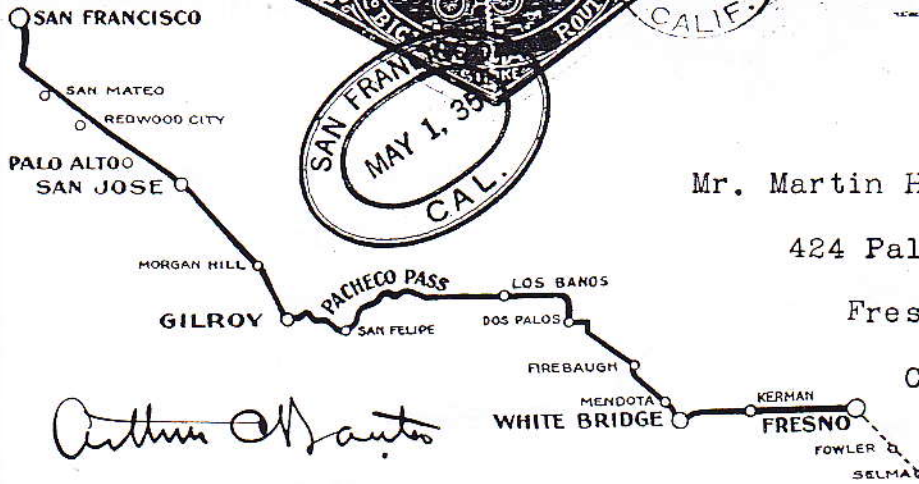
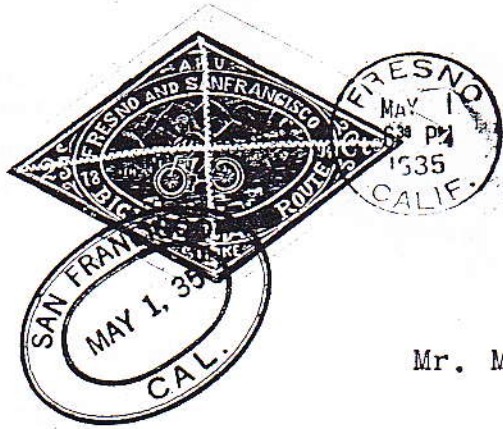
The Stamp (Scott #6240) used on this service was made from the die of which an impression in its present state appears on this letter.

CARRIED BY BICYCLE RELAY OVER ORIGINAL COURSE in race held May 1, 1935.

The 1935 Memorial Re-Run Race. Round trip cover includes a back stamp impression.



509



*Arthur C. Banta*

Mr. Martin H. Johannsen  
424 Palm Ave.,  
Fresno,  
Calif.

FROM  
ARTHUR C. BANTA  
1735 MURKHAM ST.  
SAN FRANCISCO, CALIF.



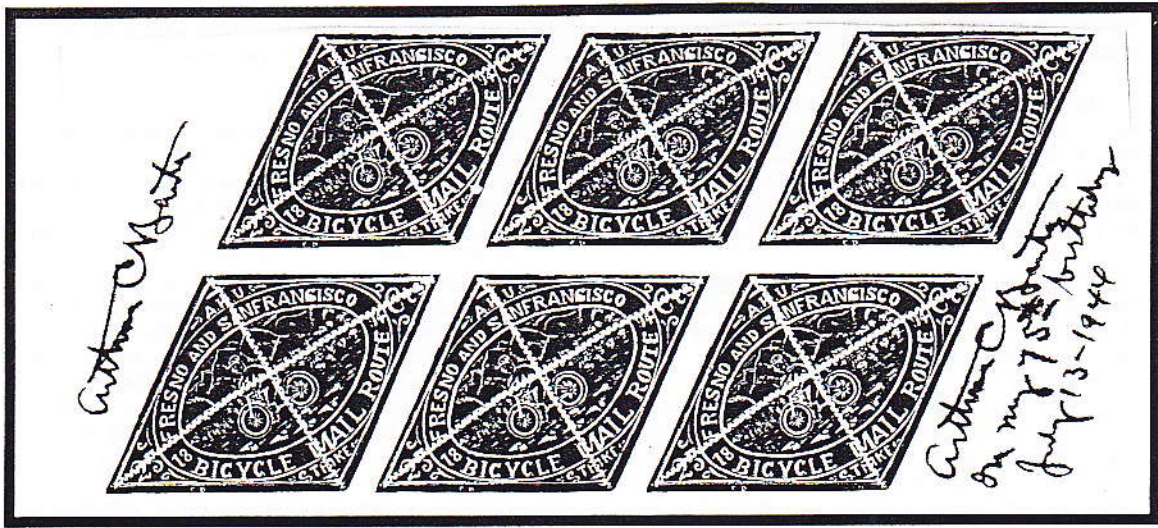
During the strike of the American Railway Union against the Pullman Car Company, July 6-18, 1894, Arthur C. Banta operated a Bicycle Mail Route between Fresno and San Francisco, a distance of two hundred and ten miles.

The Stamp (Scott #6240) used on this service was made from the die of which an impression in its present state appears on this letter.

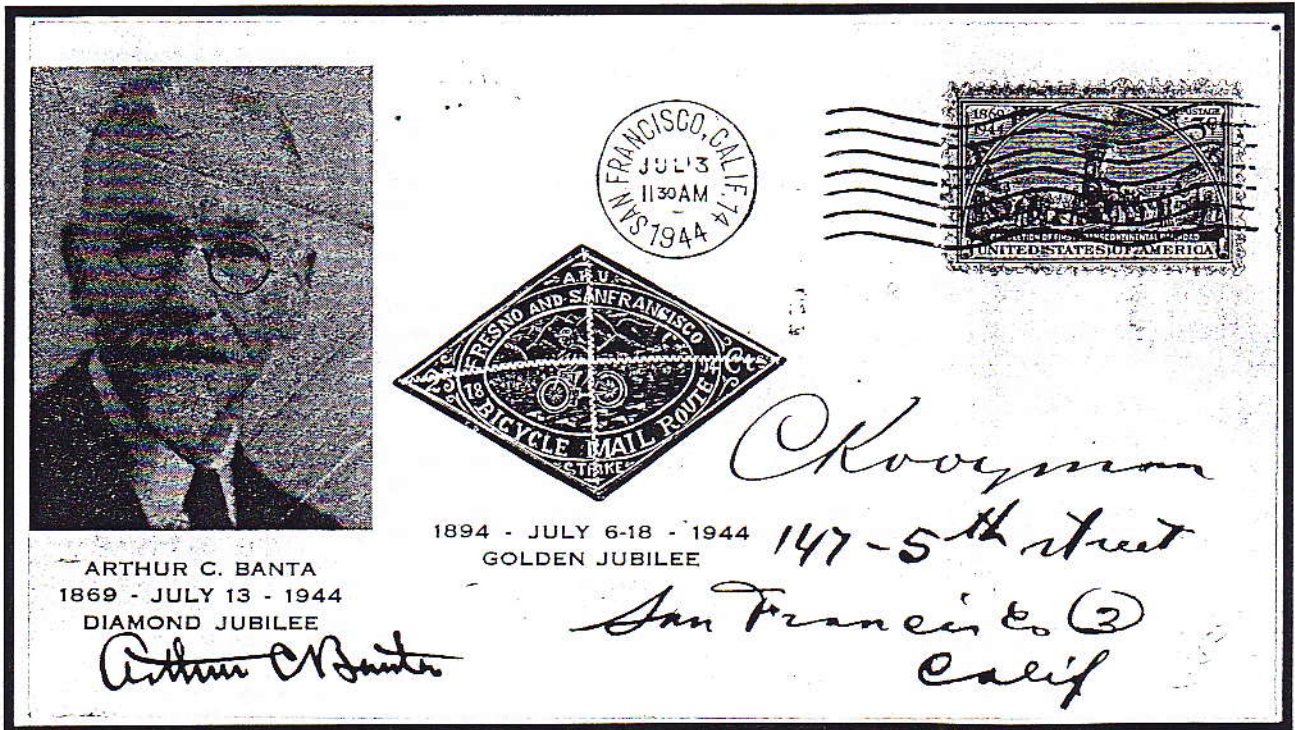
CARRIED BY BICYCLE RELAY OVER ORIGINAL COURSE in race held May 1, 1935.

The 1935 Memorial Re-Run Race. Round trip cover includes a back stamp impression.





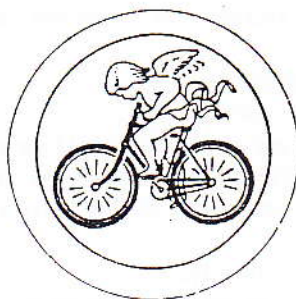
Sheet of Defaced Die Stamp, Die IV, S-3EA, without Mail Struck out. White dot under the "MAIL" on left hand top stamp. Only one sheet known to exist. Signed by A.C. Banta on July 13, 1944.



Die IV, Posted in San Francisco on July 13, 1944. Celebrates the Golden Jubilee of the Bicycle Mail Route.



The only book on Poker Chips is *Antique Gambling Chips* by Dale Seymour. The chips pictured below are the only ones known to your Editor that picture a bicycle. They are of a clay and shalac composition and were made in various colors to indicate their value, usually red, white, and blue. The three letter code beneath each is the Seymour catalog number.



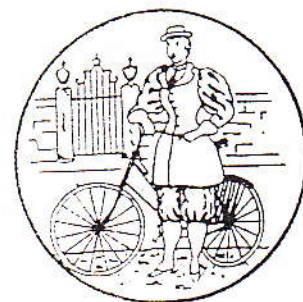
BCL-Cupid On Bike  
Engraved  
C. 1905



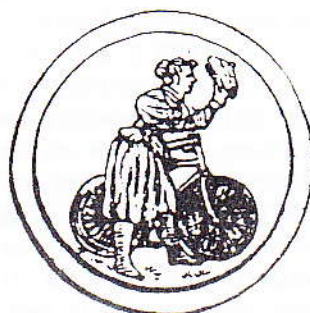
BCP-Cupid On Bike  
Engraved  
C. 1905



BIC-Lady & Bicycle  
Embossed  
C. 1907



BIE-Lady & Bicycle  
Engraved  
C. 1899



BIH-Bicycle Girl no spokes  
Embossed  
C. 1896

BIJ-Bicycle Girl 24 spokes  
Embossed  
C. 1905

BIL-Bicycle Girl large spokes  
Embossed  
C. 1905

BIN-Bicycle Girl man's bike  
Embossed  
C. 1900

1992 OLYMPIC GAMES COINS

China



Wenn auch schon Leonardo da Vinci 1495 skizzenhaft einen Vorläufer des Fahrrades zeichnete, so dauerte es doch noch gut 400 Jahre, bis das Fahrrad weitgehend seine heutige Form annahm. Vor allem im bevölkerungsreichen China, dem Ausgabeland der Olympia-Gedenkmünze „Radfahren“, ist das Fahrrad das Verkehrsmittel Nr. 1. Im Radsport unterscheidet man heute zwischen Straßenrennsport, Bahnrennsport und Hallen- oder Saal-

sport. 1896 wurde ein Straßenrennen über 87 km gleich in das I. olympische Programm aufgenommen ebenso wie das Bahnrennen. Den spannenden Wettkampf in rasanter Fahrt zeigt die offizielle Olympia-Gedenkmünze in hervorragender Gestaltung. Zu den erfolgreichsten Radsport-Nationen gehören neben Belgien, Frankreich und Holland auch die Bundesrepublik Deutschland, Italien und die Deutsche Demokratische Republik.

Die Türkei bereichert die Sympathieprägung zu den Olympischen Spielen 1992 in Albertville und Barcelona mit je einer Silbermünze zu 20 000 Lira, 925 fein, 23,3 g, 38,6 mm, Auflage je 15 000 Exemplare. Motive sind ein Eisschnellläufer und ein Radrennfahrer.



LIMONADE-SIROOP  
CITROEN.

WIELER'S KWAST  
GEDEPONEERD  
FABRIEKSMERK

BEREID DOOR  
K. PLANTINGA & ZOON  
BOLSWARD

FABRIEKEN AMST.

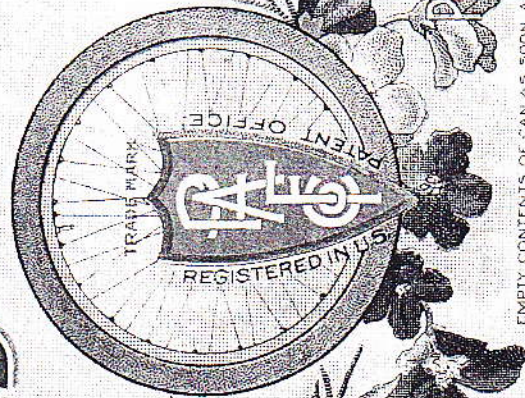
ALL HEIL!

Deutscher  
Radfahrer-  
Bitter

C. WEDDIGEN, BARMEN

CYCLE BRAND

WEIGHT OF  
CONTENTS 1-LB

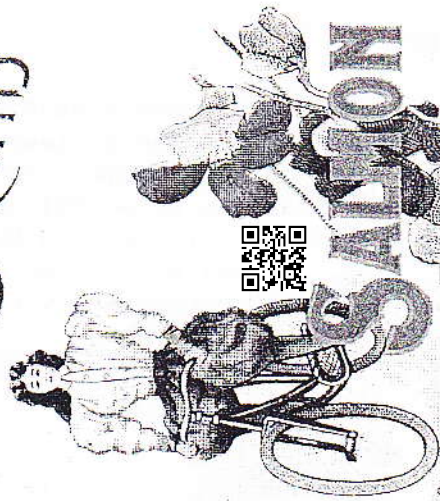


SALMON

REGISTERED IN  
U. S. PATENT OFFICE.

PUGET SOUND SALMON

CYCLE BRAND



PACKED FOR

PACIFIC AMERICAN FISHERIES  
BELLINGHAM, WASH.

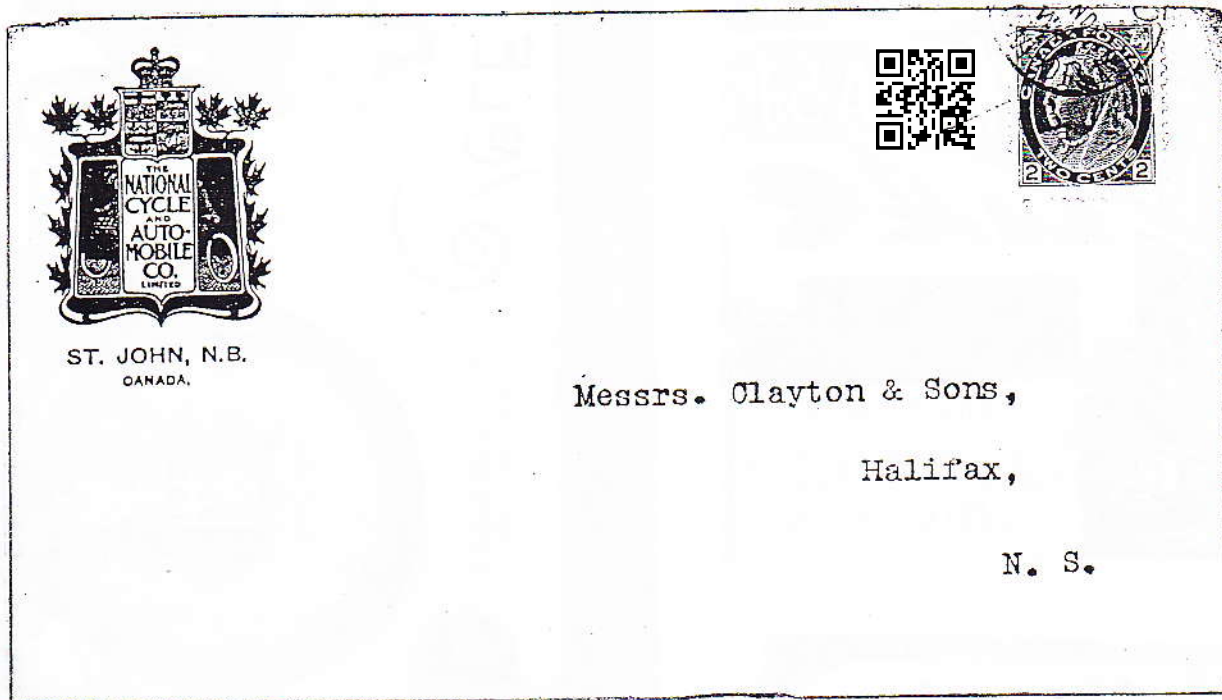
DE VING & CO. BILD CO. BELLINGHAM, WASH.



ETC.

BSC member Denis Hoddinott has sent this photo of a 1901 cover with the statement, "I have no information on what the 'National Cycle and Automobile Co. Ltd.' was, except that the date 1901 was so early it pre-dated the establishment of the Ford Motor Company in Ontario by 3 yrs.

"...If any member can offer any information I'd be delighted to correspond with them."



Earlier, a plea was made for information about the 1 colon Costa Rica item pictured on the left, printed by Waterlow. Bert Schapelhouman recently acquired two similar items, a 1 colon green and a 2 colon light brown, both printed by Thomas De La Rue & Co., Ltd., and both used. If anyone can provide information about them, it would be most appreciated.

